



SAM SAFETY TOPIC

Engine Ingestion

ALERT: AIRPORT WORKER KILLED BY PLANE ENGINE

In Montgomery airport, Alabama, USA, a ground handling staff member **tragically died as they were "sucked into the engine"** of a plane on Saturday 31st December at around 3pm. This occurred during daylight hours.

This incident has yet again highlighted what a dangerous work environment an airport apron/ramp area is as well as the dangers that live aircraft can pose. For this reason, we constantly relay this very serious warning to adhere to standard operational procedures to avoid such a tragic incident.

Procedures are set out to optimise the operation and most importantly in a SAFE and efficient manner. Standard Operational Procedures, SOPs will keep you and your fellow workers safe. Failure to follow these SOPs may result in personal injury or even loss of life.

Reminder:

- Never enter the hazard ingestion area of an aircraft until it is safe to do so! (engine off and spooled down)
- Always remain vigilant, focused, and observant when working around live aircraft
- Be extra mindful of your fellow work colleagues and correct / address any safety procedural errors
- Always follow the safety training provided to you.
- Slow down and ensure you follow procedures and report any safety occurrences

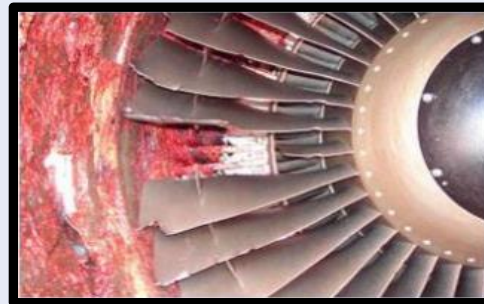
Alabama

Worker dies after being 'ingested into engine' at airport in Alabama

Ground crew worker employed by American Airlines subsidiary involved in accident while aircraft parked at gate in Montgomery

Guardian staff

Mon 2 Jan 2023 13:32 GMT



Remember that safety always starts and ends with you!!

Make Safety Work 7 Days a Week!

RYANAIR GROUP